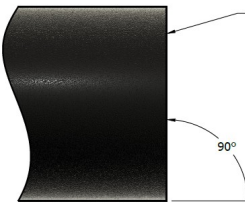
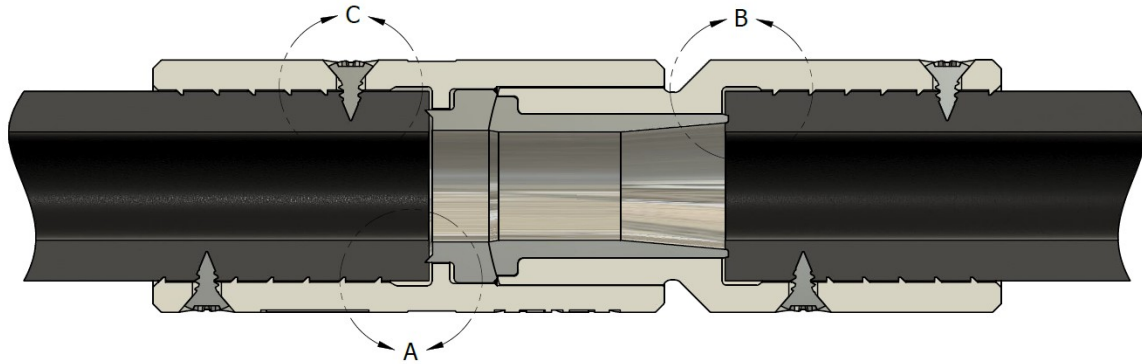


Blast Swivel installation instructions

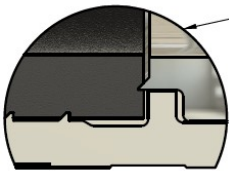


YOUR SWIVEL IS DESIGNED TO FIRMLY SCREW OVER THE BLAST MEDIA HOSE AND PROVIDES A SEAL BY SEATING AGAINST THE SWIVEL LINER. THE INTERFERENCE BETWEEN THE HOSE AND THE INNER BORE THREADS OF THE SWIVEL PROVIDES THE MAJORITY OF THE CONNECTIONS HOLD.

THE PROVIDED SCREWS PREVENT THE HOSE FROM UNTHREADING AND PROVIDE ADDITIONAL CONNECTION HOLD.

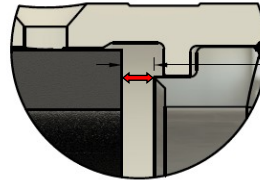
CUT AWAY ANY DAMAGED HOSE PRIOR TO INSTALLATION. ENSURE THE HOSE IS CUT SMOOTHLY AND SQUARE. FAILURE TO DO SO WILL AFFECT PERFORMANCE AND SHORTEN SWIVEL LIFE.

WHEN ORDERING A SWIVEL IT IS RECOMMENDED TO PROVIDE THE BLAST HOSE MANUFACTURER AND PART NUMBER. THIS IS TO ENSURE CORRECT HOSE/SWIVEL INTERFERENCE.

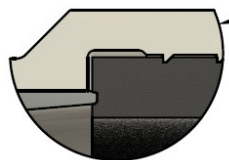


A - SCREW SQUARE CUT HOSE, CLOCKWISE INTO THE OUTLET END OF THE SWIVEL UNTIL IT IS FIRMLY SEATED AGAINST THE LINER.

BACK OFF UP TO 1/8TH OF A TURN IN THE COUNTER CLOCKWISE DIRECTION IF SWIVEL ROTATION BECOMES DIFFICULT.

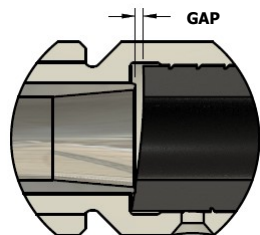


DO NOT LEAVE A GAP BETWEEN THE HOSE AND THE SWIVEL LINERS ON EITHER END

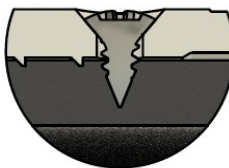


B - SCREW SQUARE CUT HOSE, CLOCKWISE INTO THE INLET END OF THE SWIVEL UNTIL IT IS FIRMLY SEATED AGAINST THE LINER.

NOTE: IF THE HOSE CONTINUES TO ROTATE EASILY AFTER CONTACTING THE LINER, YOU HAVE THE WRONG SIZE HOSE FOR THE SWIVEL. CONTACT YOUR SWIVEL SUPPLIER.



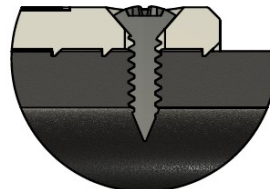
CUTTING THE HOSE ON AN ANGLE DOES NOT ALLOW THE HOSE TO PROPERLY SEAL AGAINST THE LINER.



C - INSTALL THE SUPPLIED OVAL HEAD SCREWS USING A SCREWDRIVER UNTIL THEY ARE FIRMLY SEATED AGAINST THE SWIVEL BODY.

DO NOT ROTATE THE SCREWS MORE THAN 1/2 A TURN AFTER THEY ARE SEATED.

USE OF A CORDLESS DRILL OR OTHER POWER TOOLS FOR SCREW INSTALLATION IS NOT RECOMMENDED.



DO NOT ALLOW SCREWS TO PENETRATE THE INNER DIAMETER OF THE HOSE. USE THE PROVIDED CORRECT LENGTH SCREWS.



ALWAYS ENSURE YOU ARE FAMILIAR WITH AND FOLLOW LOCAL REGULATIONS REGARDING PERSONAL AND WORKPLACE SAFETY. SATURN MACHINE RECOMMENDS THE USE OF WHIP CHECKS WHEN SWIVELS ARE USED IN APPLICATIONS THAT COULD PUT OPERATORS AT RISK IN THE EVENT OF A CONNECTION FAILURE.

WHIP CHECK INSTALLATION LIMITS SWIVEL ROTATION TO APPROXIMATELY 180°. WHIP CHECK SWIVELS ARE AVAILABLE TO RESTORE 360° ROTATION.

ADHESIVE SHRINK FIT CONNECTION SLEEVES ARE ALSO AVAILABLE TO ENSURE SCREW RETENTION AND PROVIDE ADDITIONAL CONNECTION SECURITY.